

Special initiative for World Environment Day

Deep Clean Drive - Declutter your homes



Items to be collected:

Newspaper/Magazines | Carton Boxes | Plastics (Shampoo bottles, toys, etc)
Glass | Leather | Rubber | Metal | Aluminium/Iron/Tin cans

CRT TVs, monitors, LED, LCD TVs, monitors, Set top box, Dish antenna,
Remotes, TV cables, Any type of Printer

Items NOT to be collected:

Tubelights | CFLs, batteries | Wooden Furniture

Why this Drive : This is a deep clean drive organised for the benefit of the residents to declutter their spaces- wardrobes, cupboards, lofts, bookshelves, kitchen and safely handover all junk/unused/obsolete/damaged items for recycling .

Dates : 26th Jun Friday to 28th Jun Sunday

Drop off point : Please collect all your items and drop it at the designated point in Cassia Lobby

WHY YOU SHOULD GIVE YOUR WASTE TO US

Help us achieve our vision of not only a clean city but also an environment which supports our health and well being.

We invite you to be part of this initiative to provide maximum economic benefit to waste workers and social businesses and maximum environmental benefit to the city and its citizens.

Waste Collection Drive

June 2020

BAF in association with Saahas Zero Waste



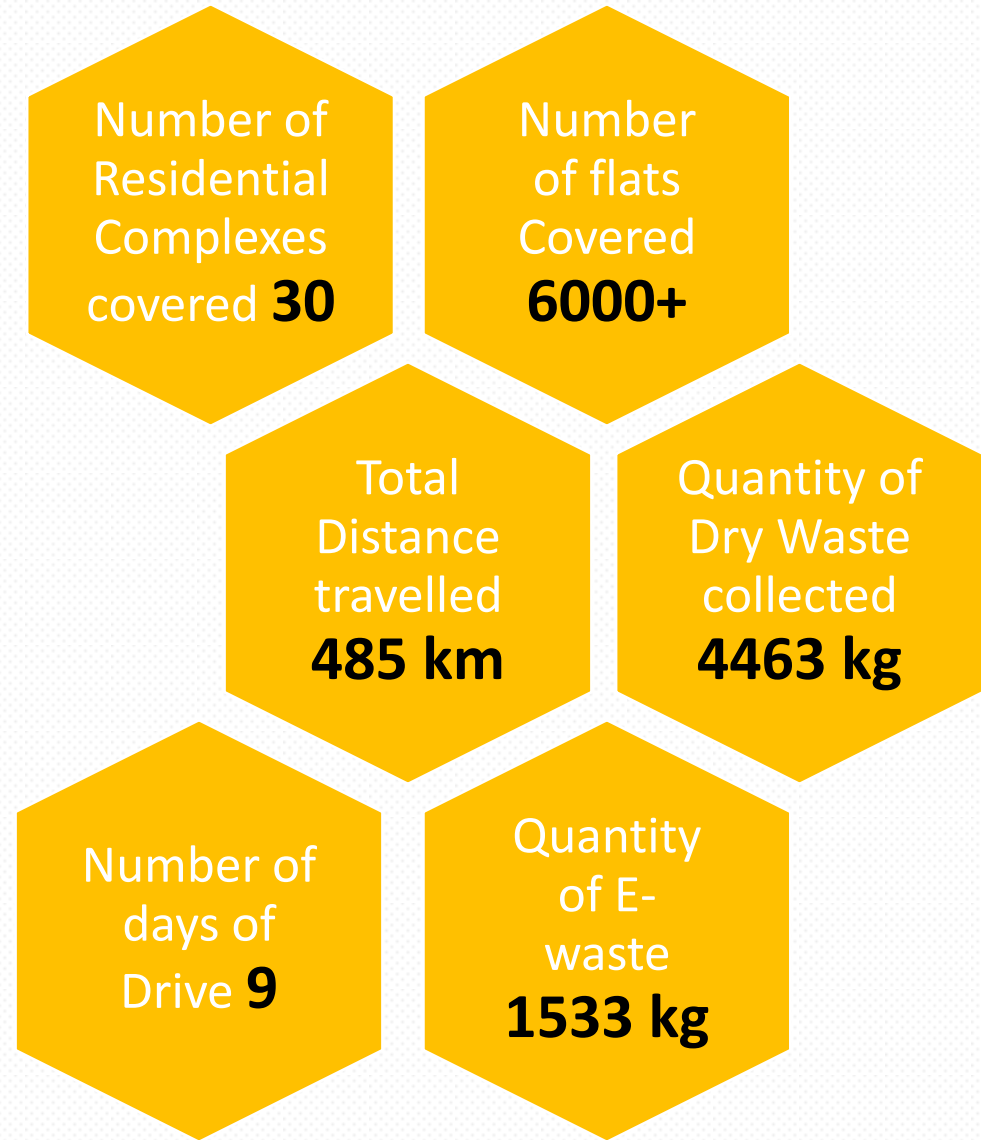
Context

In the month of June 2020, Saahas Zero Waste in association with Bangalore Apartments' Federation (BAF) conducted a dry waste collection drive for apartments in South Bangalore for World Environment Day.

Before the health crisis, Saahas Zero waste worked largely with corporate campuses and tech parks. Waste from these entities were aggregated at our MRF (Material Recovery Facility) and then sent to recyclers.

Our MRF has a capacity of 16 Tonnes per day. During the pandemic we faced challenges getting the required quantities into our MRF.

Likewise during the pandemic we realised that apartment complexes and residences were facing challenges in collection of dry waste and also recycling of the same. With support from BAF we were able to organise a collection drive for around 30 apartment complexes.



Objective of Collaboration between SZW and BAF

Environment Day

- To initiate a home declutter programme with the apartments on account of Environment day.

Support

- To increase Waste flows to SZW MRF

Behaviour Change

- To initiate behaviour change of the stakeholders involved so that waste generators choose formal waste management practices with complete resource recovery

Operations

- To demonstrate process driven services from Saahas Zero Waste .

Traceability

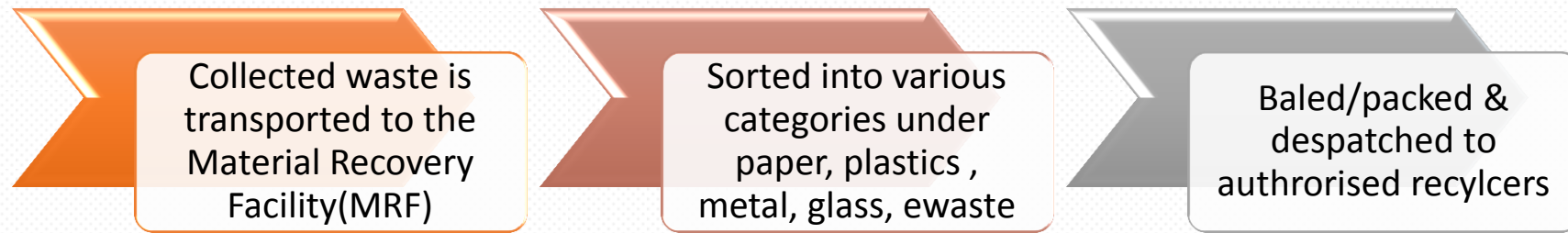
- To ensure that waste generated during the event duration reaches the authorised recyclers and end destinations and does not get dumped.

Data

- To ensure data capture of the quantity and composition of waste generated at the event is carried out accurately.

Process Flow

The waste which was received during the drive was a mix of both scrap like newspaper and magazine but also mixed dry waste.



This waste was collected and transported to our MRF (Material Recovery Facility). The same was stored for a day and then run on our conveyor system for sorting into the various categories as detailed in Waste Analysis. These individual sorted materials were compacted through baling system and dispatched to authorised recyclers/end destination for

Dry Waste Analysis

S no	Category	Rate (Rs per kg)	Material	Consolidated quantity (in kg)	Percentage
1	Negative Value	< or= 0	SCF (segregated Combustible Fractions)	704	15.80%
2			Food Waste		
3			Wood		
4			LVP (Road waste)		
5			Thermocol		
6			Glass Bottles		
7			Tissue Rolls		
8			Coconut Shells		
9	Low Value	0 -5	Foam	2,166	48.50%
10			Colour Paper		
11			Tissue Paper		
12			Plastic Milk Packets		
14			Carton Boxes		
15			MLP		
16			Iron Sheets		
18			Tetra Pak		
19	Medium Value	05-Oct	Magazines	1,504	33.70%
20			White Paper		
21			Newspaper		
22			Mixed Rigid Plastics		
23			Transparent Plastic Flexibles		
24	High Value	> 10	Metal MS	89	2.00%
25			MS Metal		
26			PET		
27			Aluminium Cans		
			Total	4463	

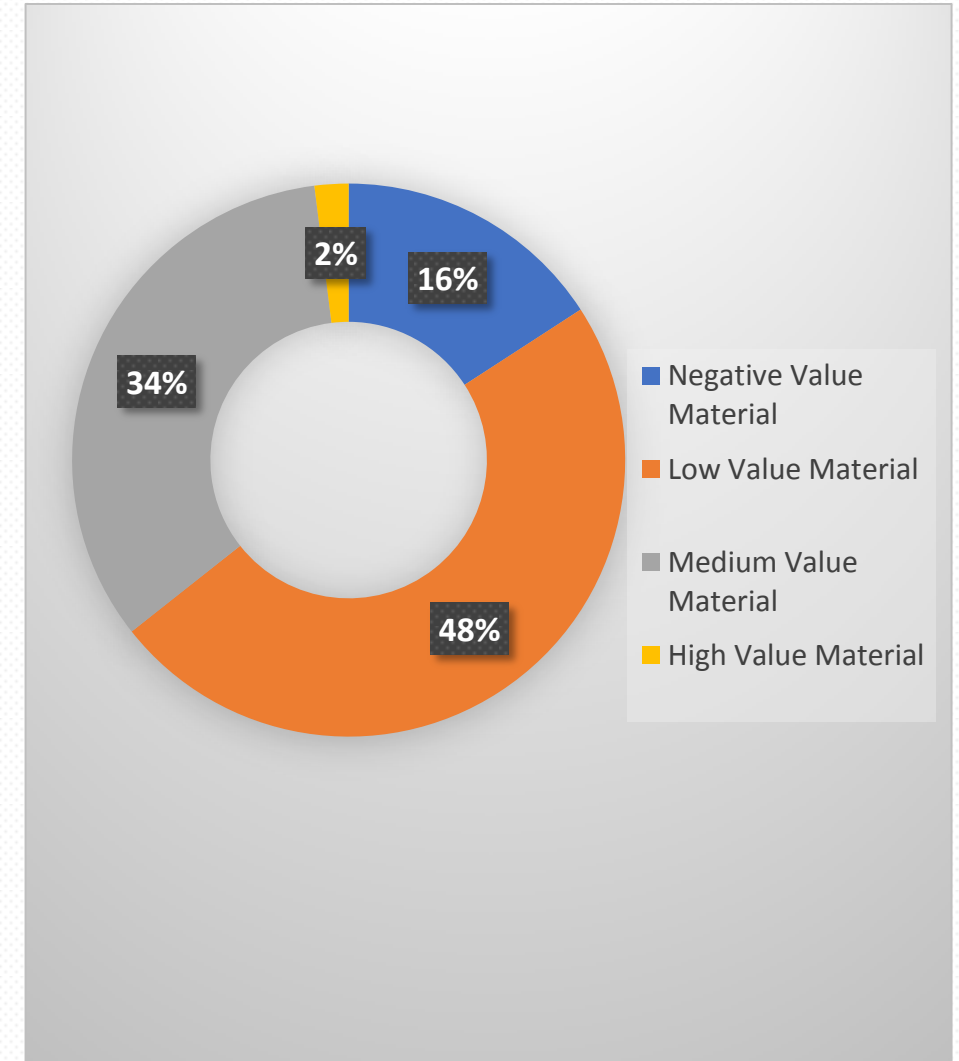
Resource Recovery



Economics of Dry Waste

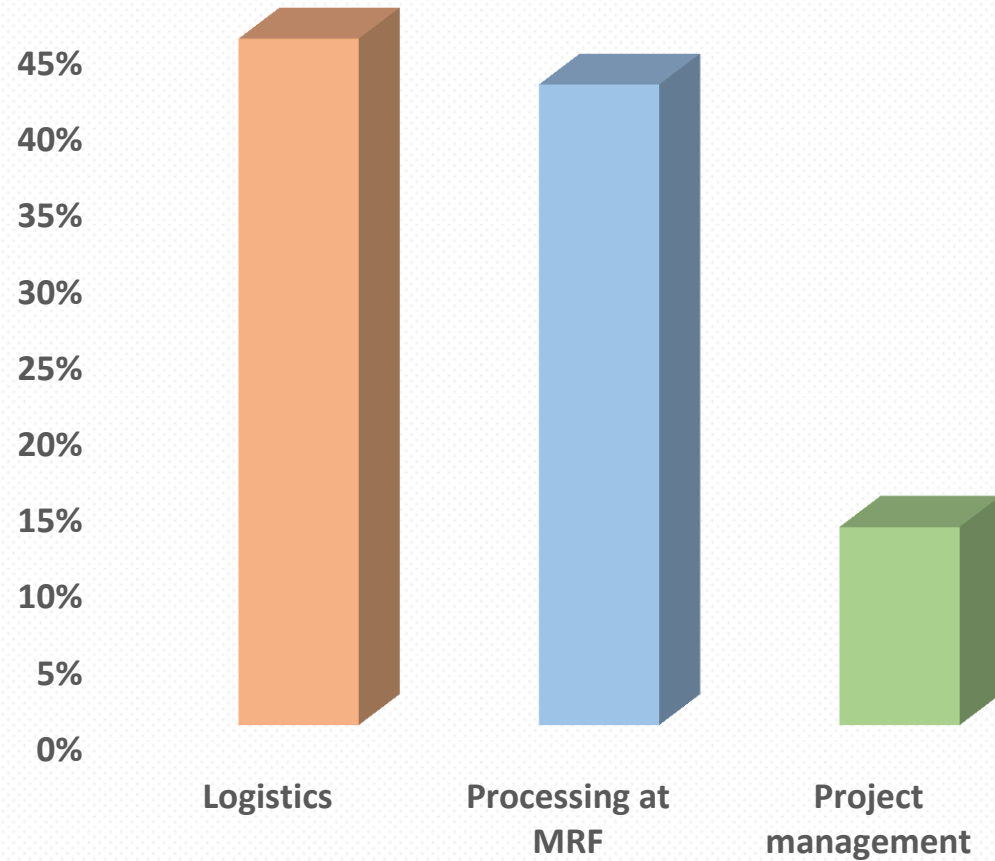
The pie chart gives a good indication of the economics of dry/scrap waste generated in apartment complexes.

- In a formal system, when waste is sorted into 25+ categories, 100% resource recovery is possible if adequate investment in terms of labour is put into this process.
- Over 98% of the waste received from apartments, were either negative value, low value or medium grade which when sold to recyclers would bring in revenues which can hardly meet the formal collection, transportation and processing cost.
- A total of 4.4 tonnes of dry waste were received during the collection.



Financial Analysis

Expenditure

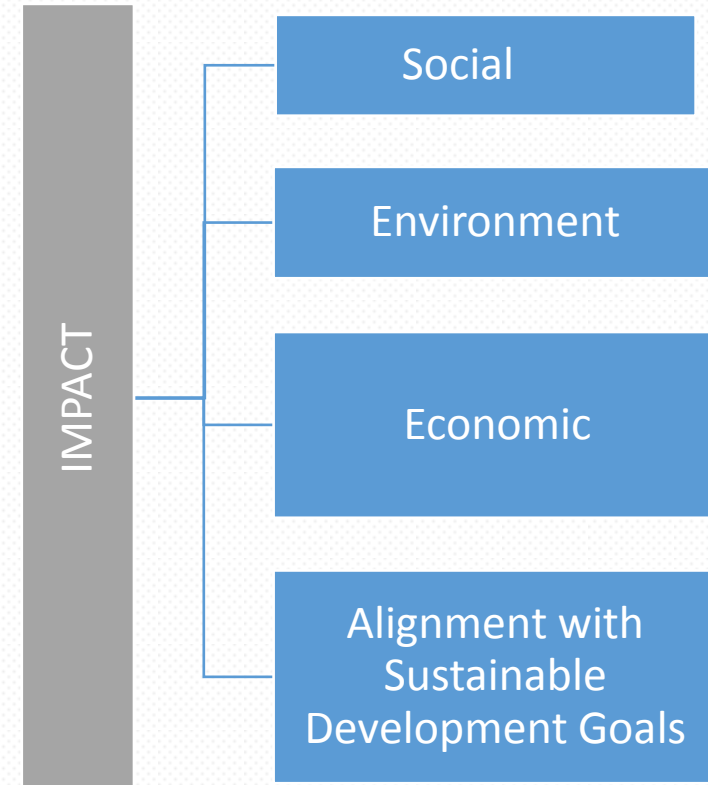


67% of the direct expenses was covered by the revenue from the sale of waste to recyclers.

This does not include the indirect costs which are part of any business

Impact

Our SUSTAINABLE DEVELOPMENT GOALS



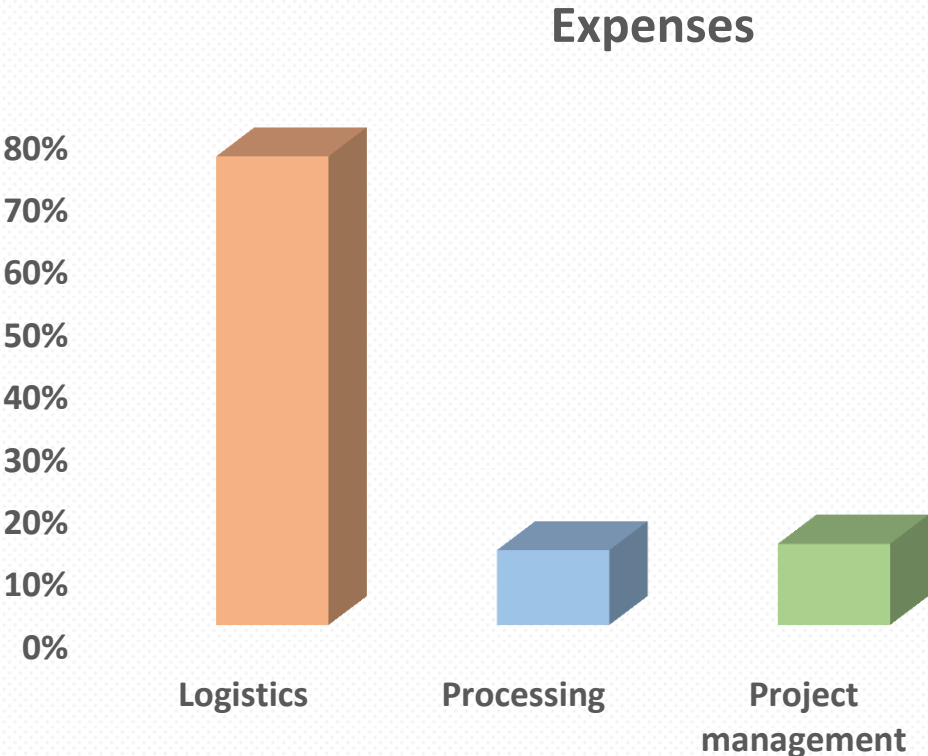
Participating Apartments

S. No	Name of Apartment complex	Cluster
1	Sumukha Opal	JP Nagar
2	Delta Forest Edge	
3	Sobha Dewflower	
4	Maya Indraprastha	
5	Adarsh Rhythm	
6	Briagade Millenium Mayflower	
7	Briagade Milleniu, Magnolia	
8	Brigade Millenium Cassia	
9	Ajmera Greens	Bannerghatta Road
10	Ranka Colony	
11	Raj Lakeview	
12	Epitome Crowne	
13	Raja Aristos	Begur
14	Splendid Lakedews	
15	GR Queens Pride	

S. No	Name of Apartment complex	Cluster
16	Raja Sannidhi	Begur
17	Royal Citadel	
18	Amoda Residency	
19	MDVR Prime Rose	
20	Vivarta Magaan	
21	Aakruti Siliverline	HSR Layout
22	GK Golden City	
23	DSR Pride	
24	Bren Palms	
25	Sumadhura Anantham	
26	Aratt Firenza	E City
27	Smondoville	
28	Prestige South Ridge	Banashankari
29	NagarJuna Green Ridge, HSR	Non-BAF
30	Mantri Classic, Koramangla	
31	Hirandani	

E-Waste Analysis and Economics

S no	E-Waste Items	Quantity (in kg)
1	Telephone/ Accessories	15
2	Refrigerator	87
3	AC	98
4	Washing Machine	98
5	TV/Monitor/Accessories	221
6	Computer/Accessories	271
7	Cables	95
8	MISC	648
	TOTAL	1533



Expenses of operations were met by the revenues from E-waste. A large portion of the e-waste collected included small misc items which contribute to negative economic value

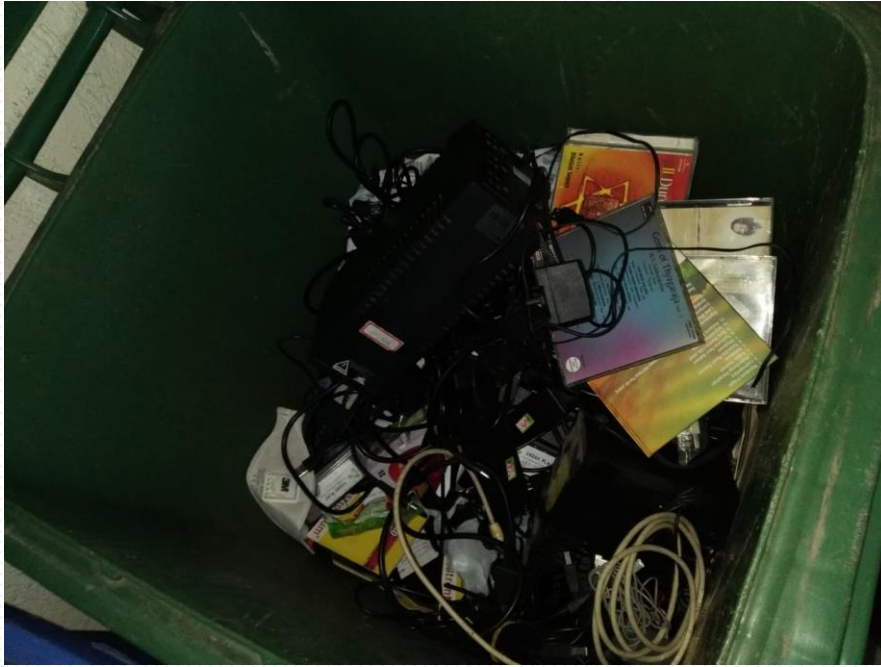
Gallery

Waste collection at apartments



Gallery

Waste collection at apartments



Gallery

Collection Drive vehicle at apartments



Gallery

Happy Households



Gallery

Happy Households



Finally waste sorting and processing at our MRF before it is sent to recyclers
Saahas Zero Waste works with authorized recyclers with whom we have signed contracts

